

# Reducing harmful fisheries subsidies

Which way forward?

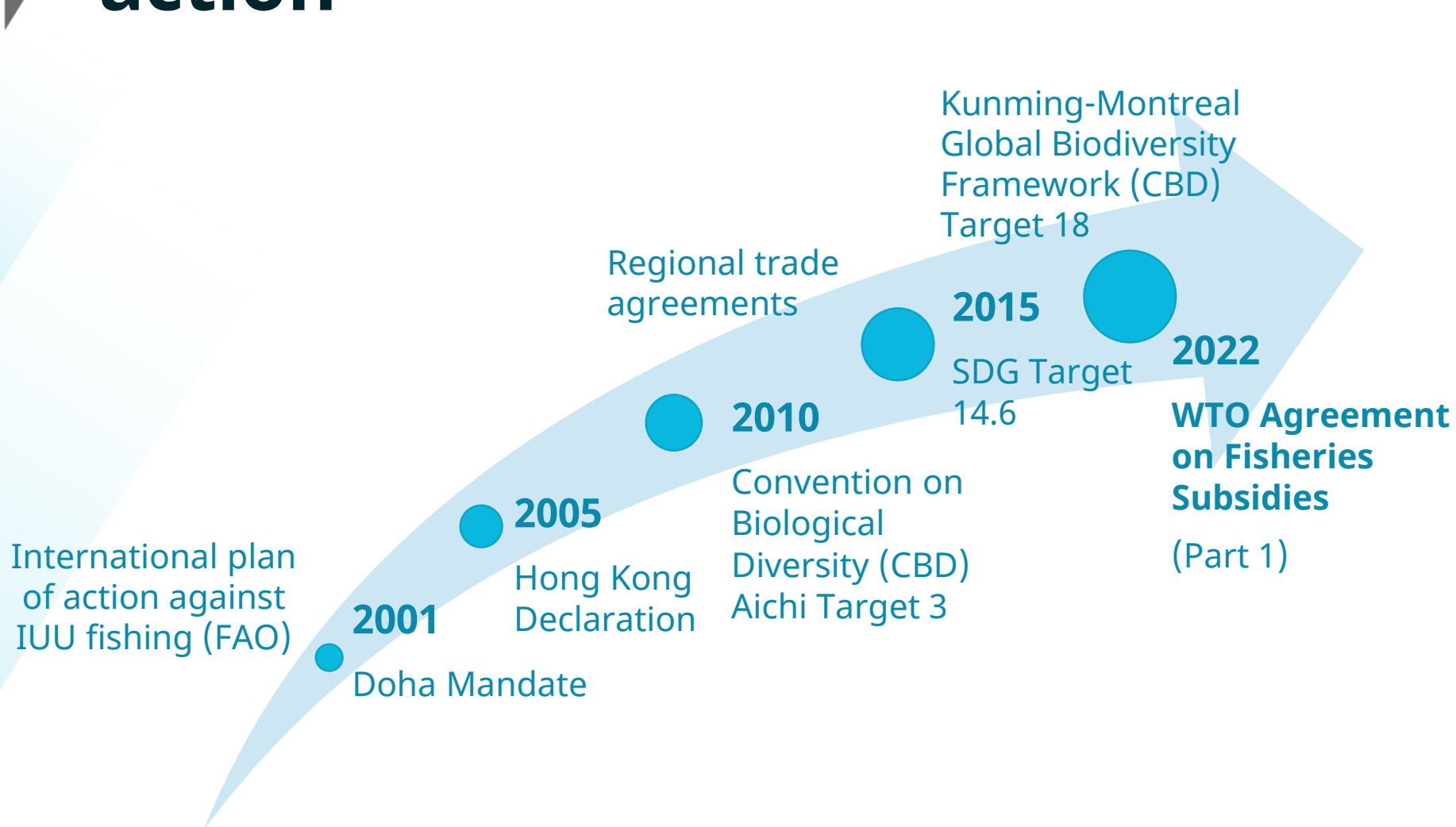
2 April 2025, Berlin

Marion Jansen, Director, OECD Trade and Agriculture



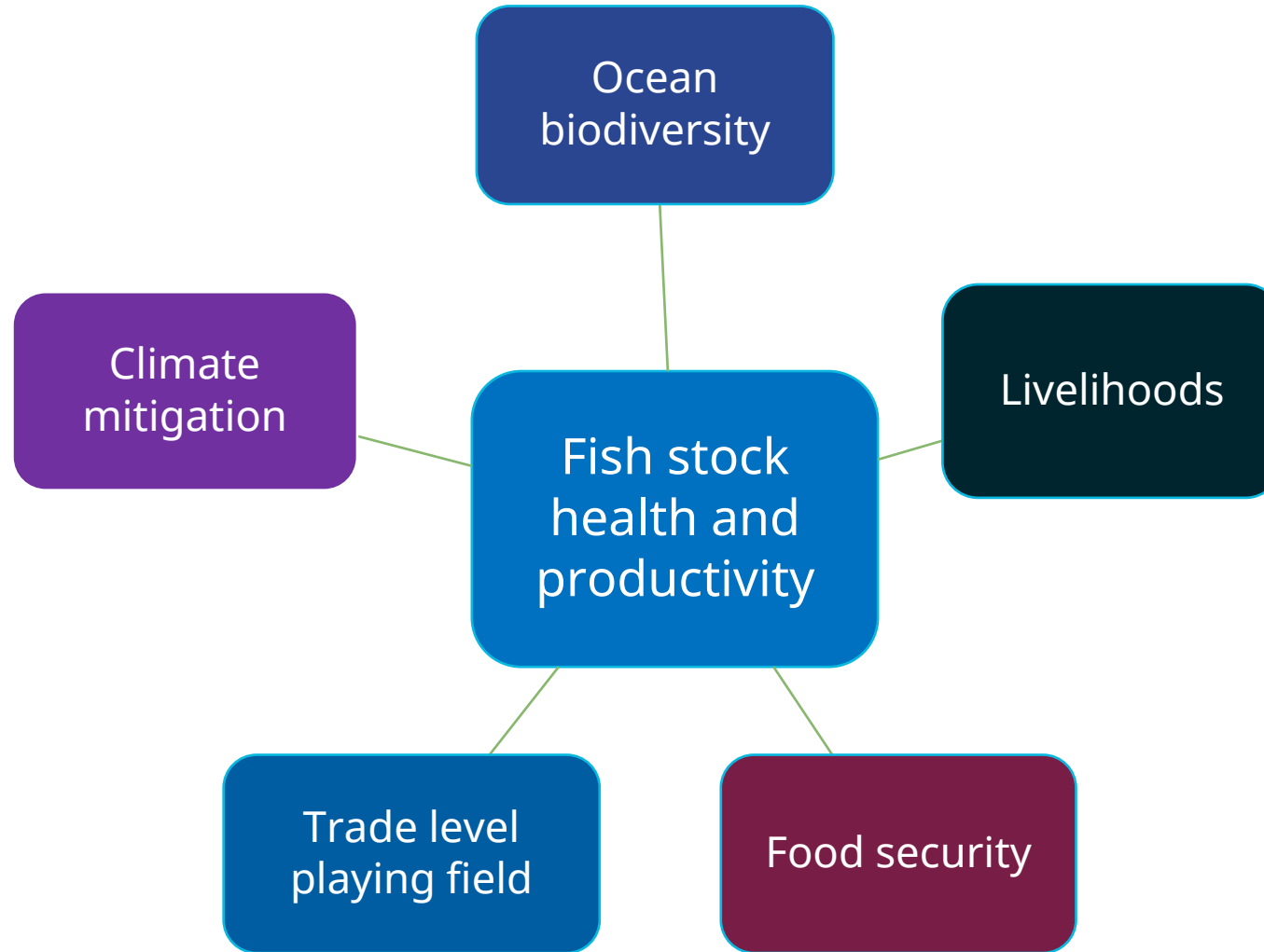


# Reducing harmful fisheries subsidies : time for action





# Fish stock health is at the heart of everything fisheries can offer to societies





# When does support bear a risk of encouraging unsustainable fishing?

## Policy support type

- Vessel construction & purchase
- Vessel modernisation & gear (capacity enhancing)
- Fuel
- Access to infrastructure
- Access to other countries' waters
- Preferential insurance

## Risk of support encouraging unsustainable fishing

**HIGH RISK** **LOWER RISK**

By directly affecting fishing costs and benefits, the policy could directly lead to increased fishing capacity and overfishing.



The actual risk of doing so can be mitigated by the policy context

- Vessel modernisation & gear (safety & environmental impact)
- Infrastructure construction & modernisation
- Fisher income
- Buyback of vessel or licence

**MODERATE RISK** **LOWER RISK**

By indirectly affecting fishing costs and benefits, the policy could indirectly lead to increased fishing capacity and overfishing.



The actual risk of doing so can be mitigated by the policy context

- Education & training
- Marketing & promotion
- Research & development (other than stock assessment)

**UNCERTAIN RISK** **LOWER RISK**

The policy could result in high, moderate or no risk.



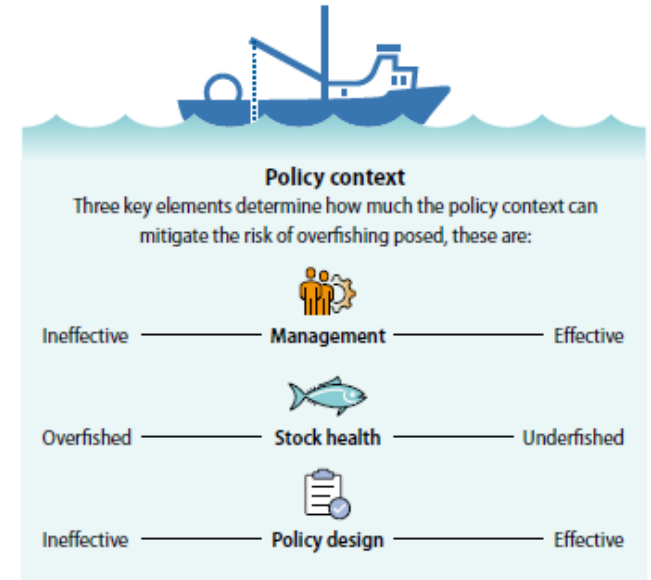
The actual risk of doing so can be mitigated by the policy context

- Stock assessment
- Monitoring, control & surveillance
- Fisheries management
- Environmental maintenance

**NO RISK**

The policy could contribute and does not present any risk

well managed





# What do we know about fisheries support?

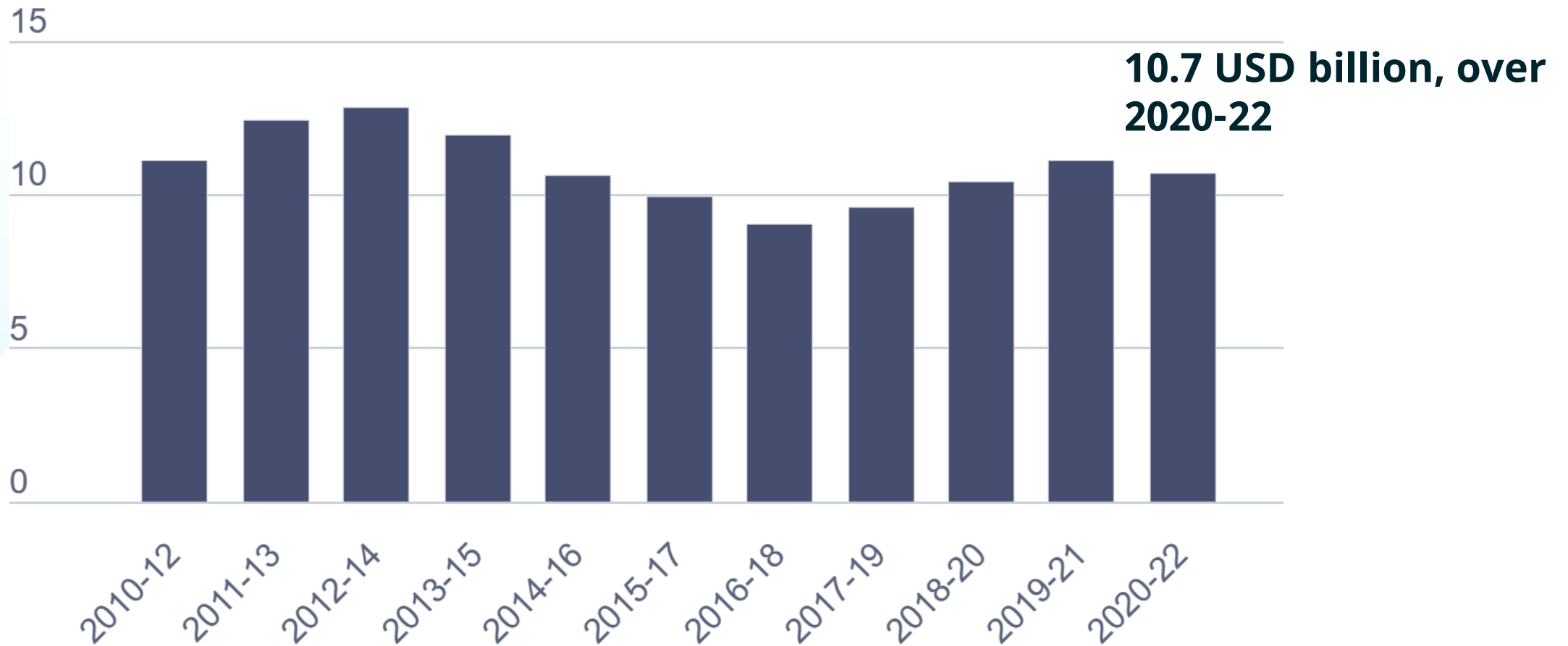
THE OECD REVIEW OF FISHERIES 2025 COVERS:

The OECD Fisheries Support Estimate Database covers:





# Total annual support to fisheries recorded in the FSE database is close to 10 billion USD



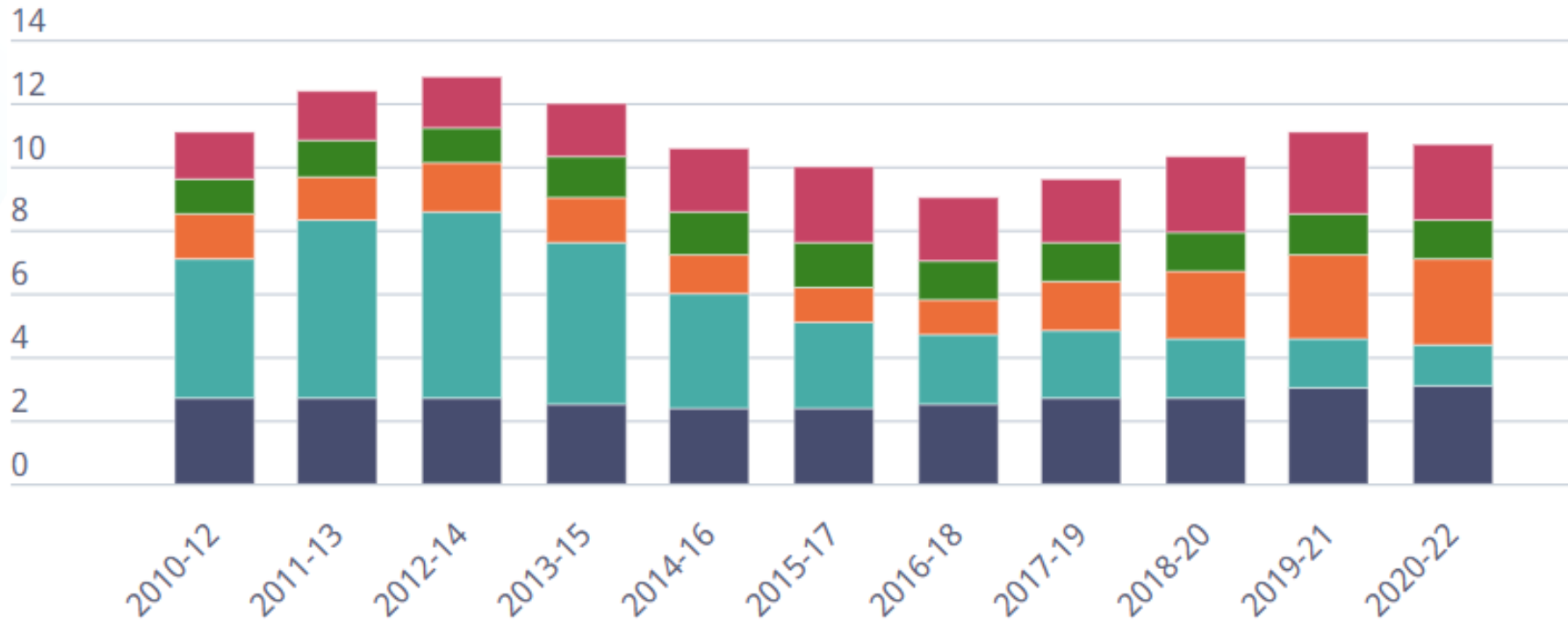


# The policy mix is evolving

**Figure 6.3. Support policy mix in recent years**

(a) All countries and territories (USD billion)

■ MMCS ■ Fuel ■ Income ■ Infrastructure ■ Other



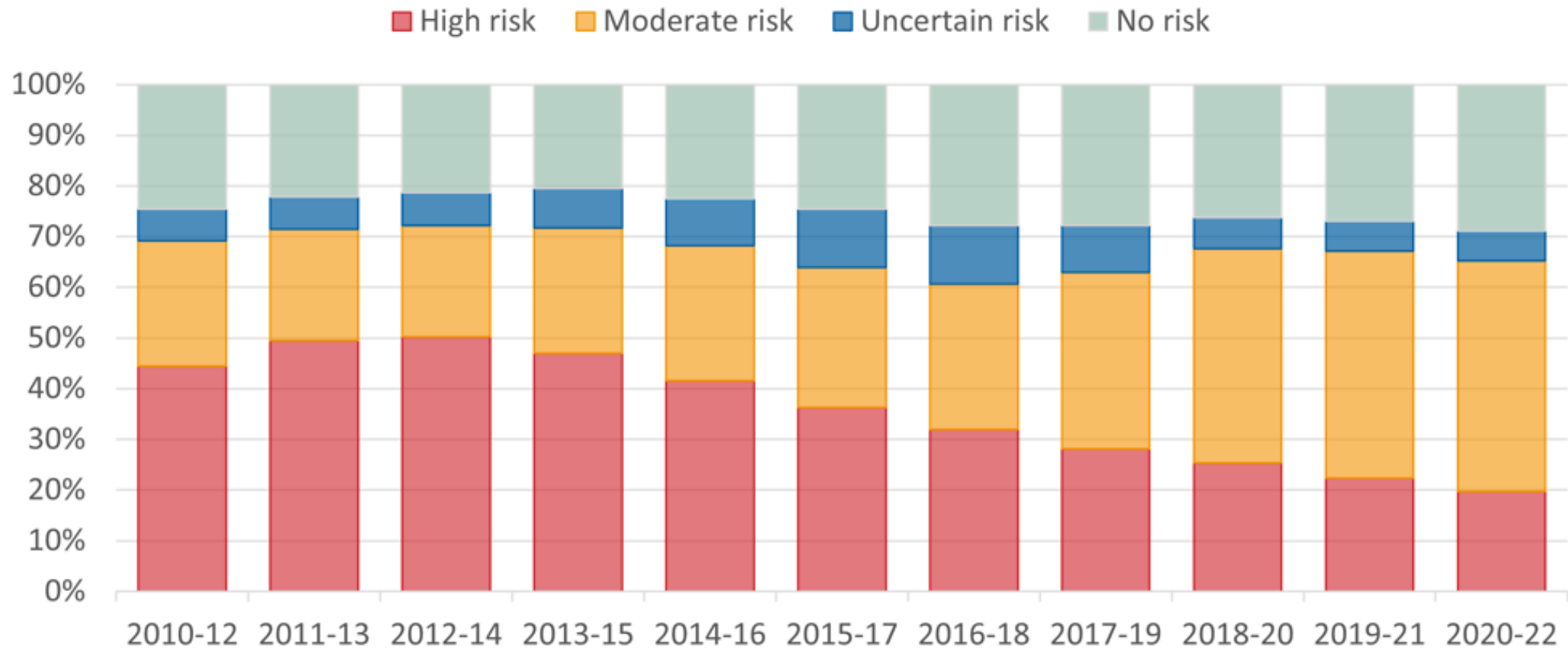
Note: MMCS: management, monitoring, control and surveillance.

Source: Fisheries Support Estimate (FSE)



# The risk of encouraging unsustainable fishing is still prevalent

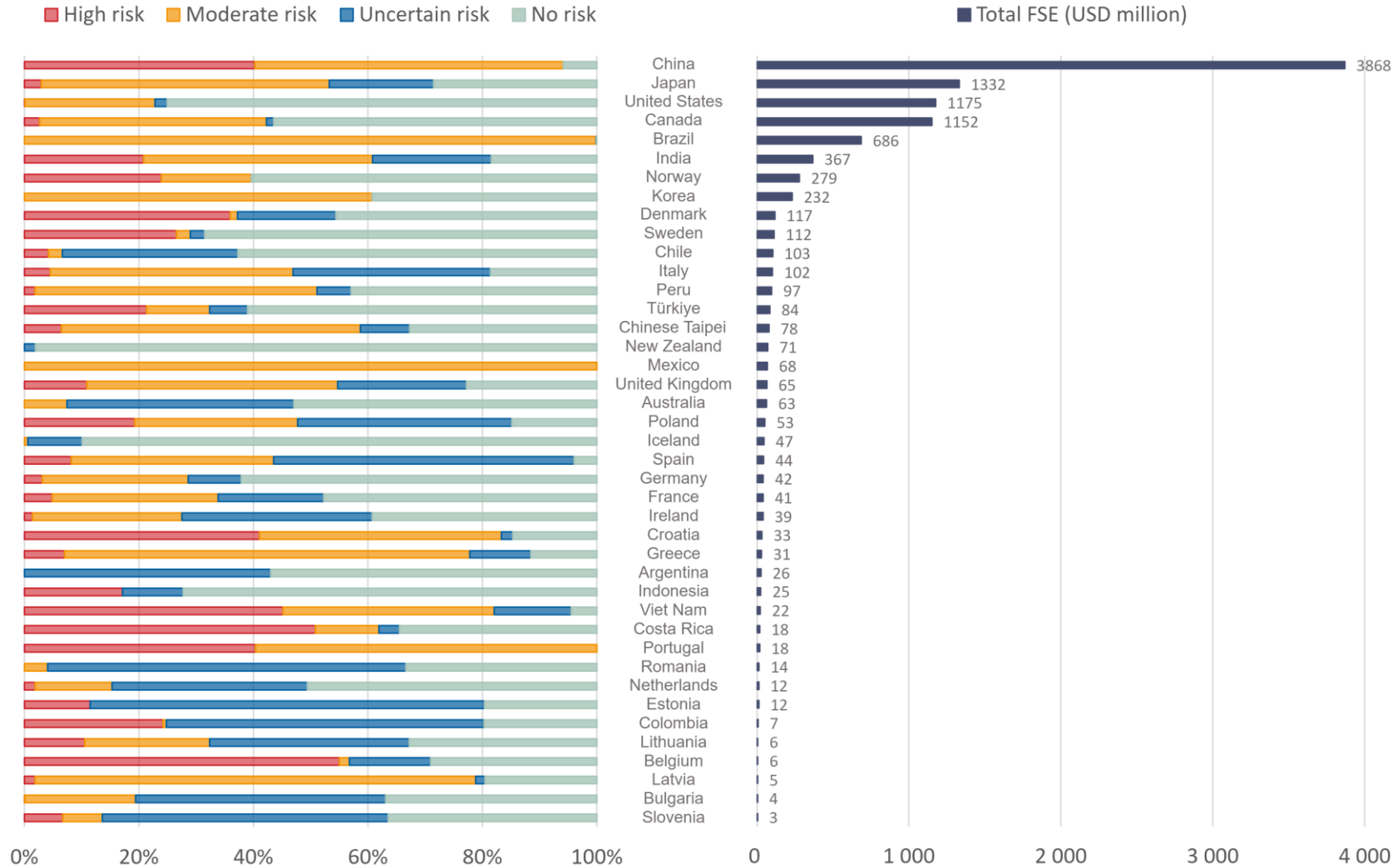
(a) All countries and territories (% total support)







# The risk profiles of individual countries vary considerably





# How can governments move away from harmful fisheries support?

- **Spend public money wisely** on support policies that don't risk encouraging unsustainable fishing
- **Target support to sustainable fishing** via eligibility criteria
- **Mitigate the risk of unsustainable fishing** by funding fisheries management, monitoring control and surveillance and the fish stock assessment science this requires



# The OECD can be a trusted partner for change in fisheries subsidy reform

